

Stich in the 'Ditch'—an easy way to apply bias tape!

Sew...find the center of your tape; open the bias tape and pin to the outside of the armhole. Stitch in the ditch of the tape. Fold over and carefully stitch again. This creates a very sturdy seam on the dress and it looks beautiful! You can also use a decorative stitch on the top of the tape.

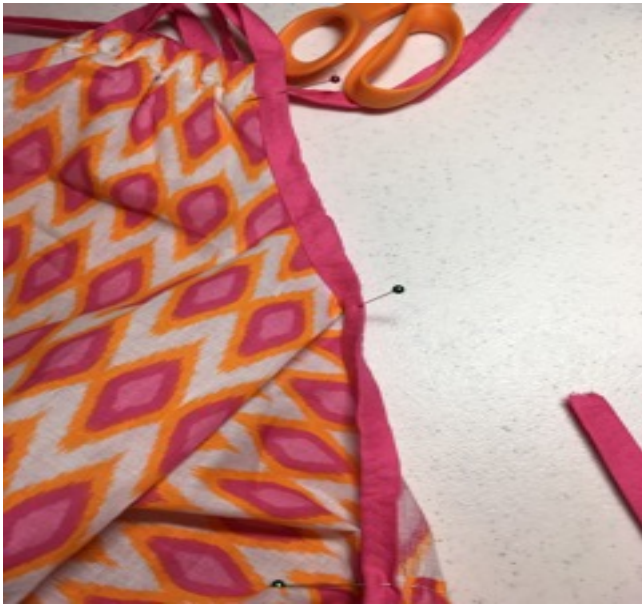
Step 1: Find the half-way point of the length of bias tape (approx. 21") and pin at the dress underarm.



Step 2: Separate the bias to find the 'ditch,' the valley fold of the bias tape; pin along the length of the armhole

Step 3: Pin the right side of bias on the valley fold to the RIGHT SIDE of the armhole fabric and 'STICH IN THE DITCH', ie sew in the 'valley'/fold, adhering one side of the bias to the dress form.





Step 4:
Carefully fold over the entire length of bias tape, pin, and stitch again, this time stitching on the top of the bias (top-stitching) and at the same time adhering the free end of the bias to the dress armhole.

Step 5: Stitch all the way to the end of the tape, backstitching well at the end.



PERFECT BIAS TAPE Sundress Strap!

